



RE/MAX
瑞 麦 北 京



里斯本Parque das Nações的Distrik新楼盘

详细信息

房源介绍：里斯本市中心Parque das Nações的Distrik项目，该项目由一个住宅和商业综合体，由4栋建筑（A、B、C和D座）公寓组成，交钥匙时间：2023年6月，首期售出的Edifício Bloco B项目总层数为13层，有81套公寓，户型从T1 - T4，带游泳池、车位、电梯和花园。首付15%即可拥有！可贷款！区域介绍：项目毗邻瓦斯科·达伽马购物中心、码头、水族馆、餐厅、办公室、超市、药店、公共交通、公立和私立学校、健身房和赌场的特权。

使用面积：61.000m²

卧室：1

卫生间：1

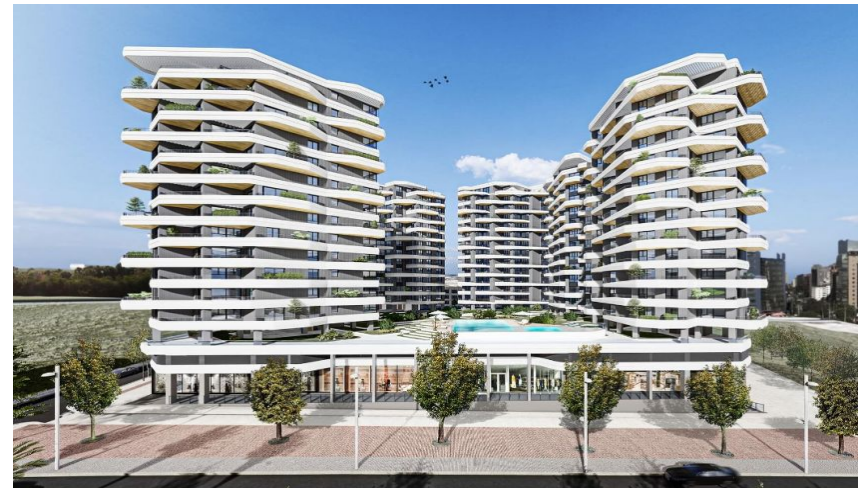
类型：公寓

楼层：7楼

房屋价格 46 万欧元

项目图片：





New home development: Distrikt by Porta da Frente Christie'sPrice from **460 €** | flats / apartments T1, T2, T3 and T4**flats / apartments available for sale**

T1 flat 460,000 €	T1	61 m²	Floor 7	Parking space included in the price	
T1 flat 475,000 €	T1	61 m²	Floor 9	Parking space included in the price	Terrace
T1 flat 505,000 €	T1	58 m²	Floor 10	Parking space included in the price	Terrace
T2 flat 640,000 €	T2	117 m²	Floor 1	Parking space included in the price	Terrace
T2 flat 680,000 €	T2	95 m²	Floor 8	Parking space included in the price	
T2 flat 695,000 €	T2	117 m²	Floor 4	Parking space included in the price	
T2 flat 720,000 €	T2	99 m²	Floor 1	Parking space included in the price	Terrace
T2 flat 730,000 €	T2	91 m²	Floor 4	Parking space included in	